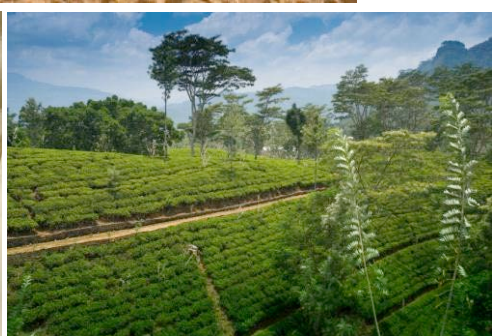


Experience, Discover & Explore

Sri Lanka & The Maldives



Itinerary prepared on behalf of

Civic Travel

Departing: Sep/Oct 2016

DAY 1 SYDNEY – SINGAPORE – COLOMBO**(In-flight meals)**

Check in for the following flight 3 hours before departure:

DEPART	SYDNEY	1510	SQ222
ARRIVE	SINGAPORE	2130	SINGAPORE AIRLINES
DEPART	SINGAPORE	2255	SQ468
ARRIVE	COLOMBO	0005	SINGAPORE AIRLINES

Destination: Colombo**Drive: 40km**

On arrival in Sri Lanka you will be met and assisted by our Airport Representative, who will direct you to your very own Chauffeur who will transfer you to Colombo, the commercial capital of the country. Once you check in at your hotel relax and recover from any jet lag.

Overnight: OZO Hotel – Dream Room

**DAY 2 COLOMBO****(BLD)**

Enjoy a relaxing morning of leisure. This afternoon, drive through the commercial and city center known as the “Fort”, built by the Portuguese in the 16th century where grand colonial era buildings stand alongside modern office structures. See the vibrant markets and bazaars of Pettah, and the National Museum with its fine collection of lovely antiques and art of Sri Lanka. You could visit a Buddhist temple and a Hindu Kovil to experience the diversity of religion, ethnicity and customs of the people.

Alternatively you may indulge in some shopping.

Overnight: As above

DAY 3 COLOMBO – KITHULGALA – NUWARA ELIYA**(BLD)**

Get up in the morning and transfer to the transfer to Nuwara Eliya, En-route stop at Kithulgala to enjoy a thrilling time (Min 01 Hour- 02 KM) of White Water Rafting in the Kalani River.

Destination: Kithulgala**Drive: 80 km**

Kithulgala - A small town perched on the hills that slope down to the flowing waters of the Kelani River. The main attractions include white water rafting; trekking and the Kelani Forest Reserve a popular bird watching location. Next continue on to Nuwara Eliya.

Destination: Nuwara Eliya**Drive: 80 km**

The beautiful town of Nuwara Eliya, set in the heart of Tea country and situated 1890 meters above sea level, is where the British succeeded in creating an English countryside with homes in styles from Georgian to Queen Anne. Check in at your hotel on arrival

At your convenience commence a sightseeing tour of the city. Visiting a Tea Factories, Gregory Lake Etc... Or enjoying a bicycle ride through the city and the tea plantations.

Overnight: Araliya Green Hills – Dlx Room



DAY 4 NUWARA ELIYA - HORTON PLAINS – NUWARA ELIYA**(BLD)****Destination: Horton Plains****Drive: 38 km**

Rise up early, pack your breakfast and by 05:30 am leave for Horton plains, the highest plateau in the country. A van takes you up to the entrance of the park and back. Horton Plains is one of the very important National parks in Sri Lanka especially for its topographical variations. It has unique vegetation and is famous for many rare and endemic highland birds.

The most awesome physical feature of the Horton Plains is the escarpment that falls 880 meters to the lowlands of the southern region of the island. Aply known as the 'World's End' the view from the precipice of the countryside below towards the south coast is spectacular.

Return to Nuwara Eliya upon completion. Spend the rest of the day at your convenience.

Overnight: As above

DAY 5 NUWARA ELIYA - KANDY**(BLD)****Destination: Train Ride to Kandy****Drive: 85 km**

After breakfast spend a couple of hours at leisure. Check out of the hotel at 12:30 PM. Proceed to Nanu Oya station to catch the train. Daily, the train leaves at 01.50 PM (Your Driver will drop you at the station and will makes his own way to the Peradeniya station by Couch to meet you on arrival). A breathtaking view of the misty mountains covered with lush tea estates, steep mountain slopes, large number of tunnels is opened from the window of the 01st Class wagon during this trip. The train reaches Peradeniya station at 05.58 PM

Kandy: The bustling hill country capital is now a UNESCO World Heritage Site. It is famous for the pink painted Temple of the Tooth which houses the most sacred religious relic, the tooth of the Buddha, the Kandy Lake built in 1807 which is an attractive centerpiece to the town. Check in at your hotel on arrival and spend the rest of your day at leisure.

Overnight: Cinnamon Citadel Hotel – Superior Room

**DAY 6 KANDY – MAWANALLA - KANDY****(BLD)****Destination: Spice Garden in Mawanalla****Drive: 25 km**

After breakfast check out from the hotel and proceed to Mawanalla. Visit a spice garden to see many different types of spices Sri Lanka is famous for. The Mawanalla spice gardens are among the best on the island. You will be introduced to different spices and shown how some of these spices are grown and processed. A processing and training unit has been set up in the area and farmers are grouped in a cooperative to ensure fair prices and you will also be able to purchase spices.

Gardens are open to visitors, a delightful place to stroll in fragrant greenery and learn about nutmeg, pepper vines, clove trees and curry, cinnamon and the precious cardamom, a relative of ginger. It grows in the shade of high jungle trees and can only be harvested by hand.

Destination: Millennium Elephant Foundation**Drive : 20 km**

Then Proceed to the Millennium Elephant Foundation (MEF) in Pinnawala. There are eight permanent resident elephants at the MEF: 04 girls - Lakshmi, Rani, Ranmenika and Pooja and 04 boys - Raja, Kandula, Kavari Raja and Bandara. International volunteers play an important role at the MEF contributing to the daily running and future development of the charity. Witness the feeding of the elephants. Observe them as they take their daily bath in the river nearby, which offers marvelous photo opportunities.

Return back to the hotel on completion and commence a city tour in Kandy: take an upper-lake ride to the top of the hill where a bird's eye view opens of the city below and visit the Gem Museum and other attractions in the Kandy city.

At 17:00 enjoy a Kandyan Cultural show at the Kandyan Arts & Cultural Centre. The show features the graceful and rhythmic dancers and drummers culminating in an impressive fire walking display. Soon after the show, visit the sacred Temple of the Tooth Relic. Monks conduct daily worship in the inner chamber of the temple. Rituals are performed three times daily: at dawn, at noon and in the evenings.

Overnight: As above

DAY 7 KANDY – TRINCOMALEE

(BLD)

Destination: Trincomalee

Drive : 200 km

After breakfast check out the hotel and leave for Trincomalee. En route visit a Batik Factory and Tea Factory at Matale. While in your hotel, you can enjoy a number of water sports such as swimming, body-surfing or diving in the sea, jet-skiing, windsurfing, parasailing, and water-skiing. All the equipment you need can be hired.

Trincomalee, the port city with heavenly sights from the turquoise waters to the golden sandy beaches, the British and Dutch heritage to the most recent additions to the land that make it worth the journey. From sightseeing to recreational and relaxation, Trincomalee is the place to be. The Koneswaram Temple dedicated to Lord Shiva that stands atop a cliff since it's relocation by the Portuguese, to Lover's Leap which has a love story connected to it, to the beauty that is Nilaveli beach, Fort Fredrick which was built by the Dutch and much more. This beautiful and colourful city has many stories to tell and many sights to see. One of the famous attractions being the Nilaveli Beach that has golden sand flirting with the turquoise of the Indian Ocean until the eye can see.

Overnight: Chaaya Blu Hotel – Superior Room



DAY 8 TRINCOMALEE

(BLD)

Destination: Trincomalee

Drive: NA

Get up in the early morning and arrive at Trincomalee Harbor at 6:00AM., when the sun rises and whales start to emerge from beneath the sea. It's a ninety percent chance of seeing whales if coming in the right season from April to October next year.

Whale watching in Trincomalee- Starting out at 0600 hours from the white sandy beach, a sailing boat will take you on a Marine Mammal Safari. The boat will spend 3 hours out at sea and with the assistance of our highly trained and skilled sea-going naturalists, you will be able to witness a variety of cetaceans that frequent Sri Lankan waters. Be amongst super pods of Sperm Whales and witness the largest animal to inhabit our planet: The Blue Whale – all part of an aquatic adventure with Nature Trails.

Overnight: As above

DAY 9 TRINCOMALEE - DAMBULLA

(BLD)

Destination: Dambulla

Drive: 100 km

After the breakfast at the hotel check out and proceed to Dambulla, Check in at your Hotel on arrival and spend the rest of your day at leisure.

En-route climb the rock fortress of Sigiriya - a 5th Century '**Fortress in the Sky**', built by King Kassapa the fortress was a Royal Citadel for more than 18 years. Sigiriya, also called as the lion rock (**UNESCO** World Heritage Site) stands 200 metres above the scrub jungle. The base of the rock is ringed by a moat and rampart and extensive gardens including the renowned water gardens. The majestic Lion's Paw picturesquely guards the stairway of the palace on the summit. See the famous frescoes of the 'Heavenly maidens' of Sigiriya in a sheltered pocket of the rock and the 10 foot high Mirror Wall. At the foothills, visit the Sigiriya museum as well.

Overnight: Thilanka Resort and Spa – Dlx Room



DAY 9 **DAMBULLA – POLONNARUWA – MINNERIYA NP - DAMBULLA** **(BLD)**

Destination: Polonnaruwa

Drive: 55km

Morning Mountain Cycle tour to one of the ruins of ancient Ceylon - the **UNESCO** World Heritage City of Polonnaruwa, which was the Capital of Sri Lanka from the 11th to 13th century. A well-planned medieval city defended by enclosing walls (around 5 km. which still remain), graced by palaces, shrines, monasteries, pavilions, parks, ponds and irrigation lakes. Polonnaruwa is strewn with ruins in a resplendent state of preservation. The '**Gal Vihara**' which consists of statues of the recumbent, standing and seated Buddha have been cut from a single granite wall and rank among the true masterpieces of Sri Lankan Art.

Destination Minneriya National Park

Drive 15km

In the afternoon commence a jeep safari in the National Park by private jeep accompanied by a tracker. Minneriya National park one of Sri Lanka's premier eco tourist Destinations and is renowned for its variety of wildlife notably its many elephants.

It is also home to the spotted deer, sambar, wild buffalo, sloth bear, jackal, mongoose and crocodiles. The peacock is easily the most famous of the birds in this park.

Overnight: As above

DAY 10 **DAMBULLA – NEGOMBO** **(BLD)**

Destination: Dambulla

Drive: 05km

After breakfast check out of the hotel. Explore the famous Golden Rock cave temple which has been declared a **UNESCO** World Heritage Site. A sacred pilgrimage site for 22 centuries, this cave monastery, a vast isolated rock mass with its five caverns is the largest best preserved cave-temple complex in Sri Lanka.

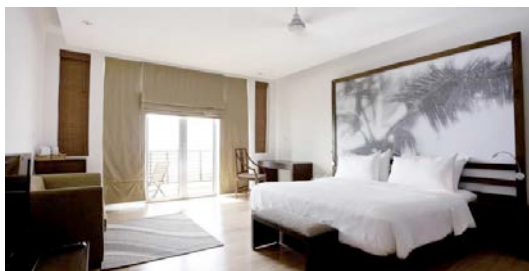
The Buddhist mural paintings (covering an area of 2,100 sq. meters) are of particular importance as are the 157 statues including a 47 foot long statue of the recumbent Buddha. The ceiling of one cavern is fully illustrated with paintings that follow the natural folds of the rock so closely that it appears to be made of cloth.

Destination: Negombo

Drive: 160km

Check in at your hotel on arrival. Your guide will introduce you to some of Negombo curious sites such the Dutch churches, perhaps take a boat ride along the Dutch canals or enjoy the beach. Spend the afternoon at leisure watching the waves as they bounce off the sun-kissed sands.

Overnight: Jetwing Sea Hotel – Dlx Room



DAY 10 **NEGOMBO – COLOMBO - MALDIVES****(BLD)****Destination: Airport****Drive: 10km**

Now that you are at the end of your Sri Lankan journey with us, after breakfast your chauffeur will comfortably take you to the international airport in time for your departure flight.

Destination: Male

DEPART	COLOMBO	1335	UL115
ARRIVE	MALE	1430	SRI LANKA AIRWAYS

On arrival in Male you will be met and assisted by our Airport Representative, who will direct you to your speed boat transportation to the resort. Check in for 4 nights, spend the evening at leisure.

Overnight: Paradise Island Resort and Spa – Superior Beach Bungalow

**DAY 11-13** **MALDIVES****(BLD)****Destination: Beach**

After Breakfast spend your day at leisure, watching the waves as they bounce off the sun-kissed sands.

Overnight: As above

DAY 14 **MALDIVES – SINGAPORE****(B--)****Destination: Airport**

After breakfast you will transfer to the international airport in time for your departure flight from the speed boat.

DEPART	MALE	1250	SQ461
ARRIVE	SINGAPORE	2035	SINGAPORE AIRLINES

DAY 15 **SINGAPORE - SYDNEY****(In-flight meals)**

DEPART	SINGAPORE	0045	SQ461
ARRIVE	SYDNEY	1025	SINGAPORE AIRLINES

End of the tour

TOUR COST

HOTEL ENVISAGED/SIMILAR

Ozo Colombo http://www.ozohotels.com/colombo-srilanka/	Dream Rooms
Araliya Green Hills Nuwara Eliya http://araliyagreenhills.com/	Deluxe Rooms
Cinnamon Citadel http://www.cinnamonhotels.com/CinnamonCitadelKandy.htm	Superior Rooms
Chaaya Bly Trincomalee https://mail.google.com/mail/u/1/#search/chaaya+blu	Superior Rooms
Thilanka Resort and Spa Dambulla http://www.thilankaresortandspa.com/	Deluxe Rooms
Jetwing Sea Negombo http://www.jetwinghotels.com/jetwingsea/	Deluxe Rooms
Paradise Island Resort and Spa Male http://www.villahotels.com/Resorts/Paradise-Island-Resort-Spa	Superior Beach Bungalow

TOUR COST – VALID FROM 01 SEPTEMBER TO 31 OCTOBER 2016 BASED ON 10 PERSONS

Above rates include :

- 35 Meet and assist on arrival & assist on departure in Sri Lanka and In Maldives
- 17 Accommodation at the mentioned hotels or hotels with Similar standards
- 35 Breakfast, Lunch and Dinner
- 17 In Sri Lanka Transportation by air-conditioned Luxury Mini Coach with a English Speaking National Guide
- 35 In Maldives Return airport transportation by a Speed Boat
- 17 Porterage at the airport and at all hotels
- 35 Entrance fees to the visiting sites
- 17 White Water Rafting in Kithulgala (02 KM)
- 35 Trek in Horton Plains (03 Hours)
- 17 Whale & Dolphin Watching in Trincomalee
- 35 4WD Safari in Minneriya
- 17 500 ml x 02 Mineral water bottles per day per person
- 35 Return international flights with Singapore Airlines incl tax
- 17 Sri Lankan Airways flight Colombo – Male incl tax

Complimentary includes :

- 35 5% Discount Voucher to shop at "ODEL" Dress Boutique in Colombo
- 17 20% discounted voucher at Tiesh by Lakmini Colombo (Jewelers)
- 35 Non Cashable Casino Chips worth Rs. 1,000 per person @ Bellagio Casino Colombo
- 17 Free Wi-Fi in the Coach while Travelling in Sri Lanka (*Limited)

Cost does not included :

- 35 Visa
- 17 Supplements mentioned
- 35 Gratuities
- 17 Items of personal nature such as, laundry, telephone calls, tipping etc.
- 35 Any other special supplement introduce by the government or hotel due to various reasons

Terms & Conditions:

Please note the above is only a quote and we have not blocked any accommodation or tickets so far. Once you give us a go ahead with the booking we will initiate reservation and advise you of the status accordingly.

The rates are subject to change without any prior notice due to any new taxation, Fuel increase or Major fluctuation in exchange rates

The rates are not valid during any special event, fair and exhibitions as all hotels charge supplements during any special events